

41-13

# PLAT NO. 9 EASTPOINTE SUBDIVISION

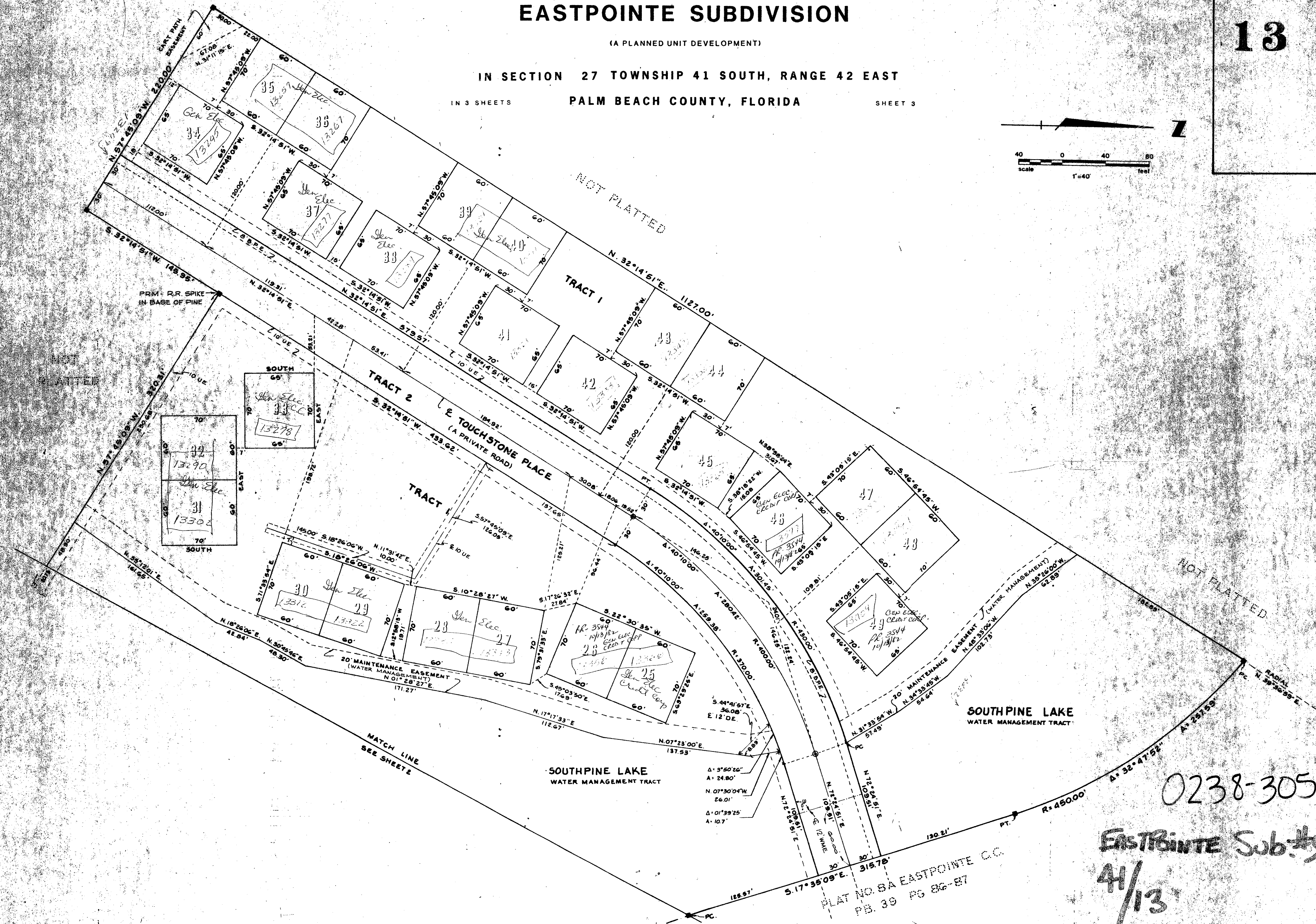
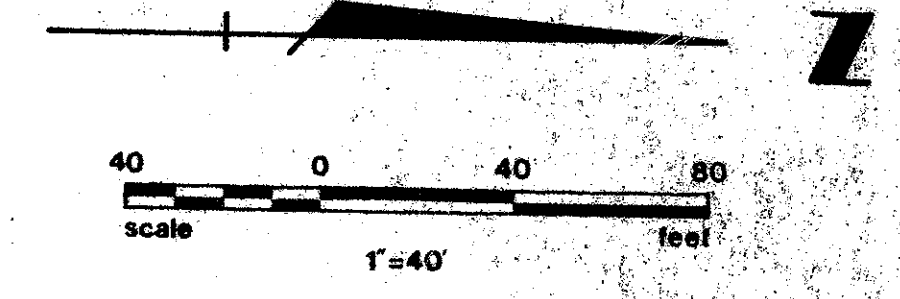
(A PLANNED UNIT DEVELOPMENT)

IN SECTION 27 TOWNSHIP 41 SOUTH, RANGE 42 EAST

IN 3 SHEETS PALM BEACH COUNTY, FLORIDA

SHEET 3

13



0238-305

EastPointe Sub #9

41/13

PLAT NO. 8A EASTPOINTE C.C.  
PB. 39 PG 86-87